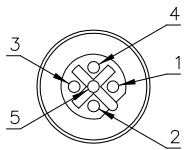
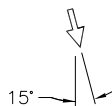
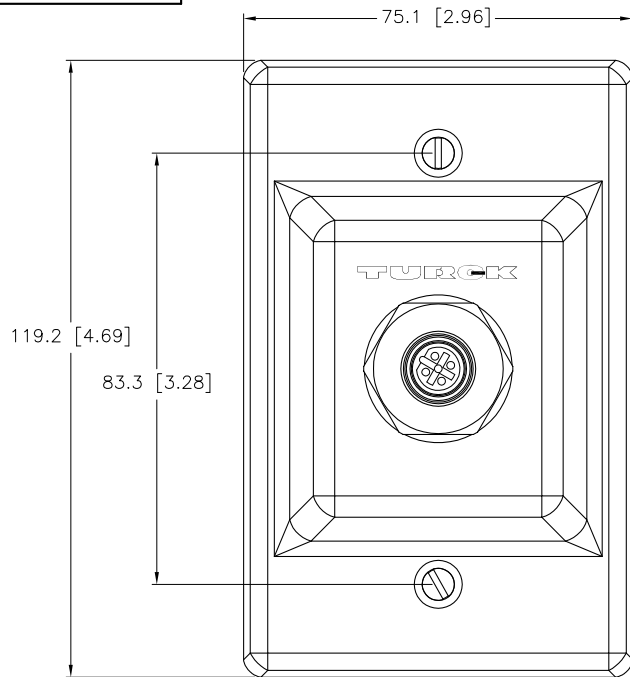


FEMALE END VIEW



- 1 = N/C
- 2 = GREEN (BUS_A)
- 3 = N/C
- 4 = RED (BUS_B)
- 5 = BARE (SHIELD)



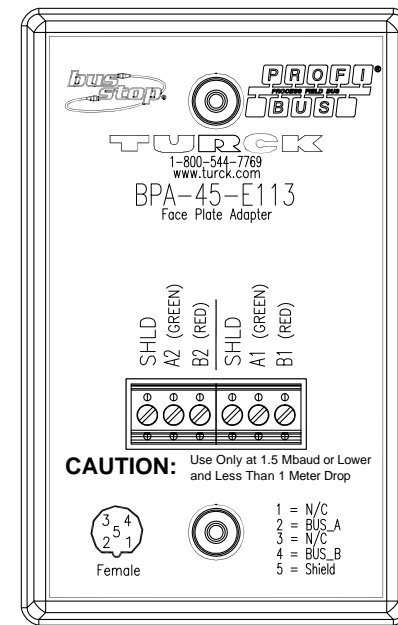
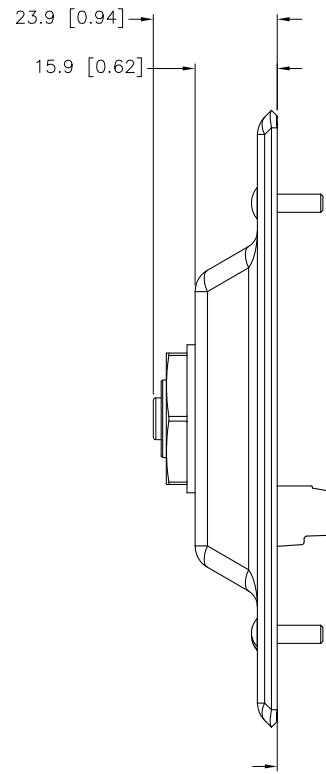
NOTES:

1. GASKET NOT SHOWN FOR CLARITY.
2. DATA RATE MUST BE < 1.5 MBAUD
3. DROP LENGTHS MUST BE < 1 METER.

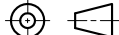
↑ = 90° CORDSET CABLE DIRECTION

SPECIFICATIONS

WALL PLATE MATERIAL	16 GA. 316 STAINLESS STEEL
RECEPTACLE HOUSING MATERIAL	STAINLESS STEEL, PASSIVATED
SEALING GASKET MATERIAL	CLOSED CELL POLYETHYLENE FOAM
MOUNTING HARDWARE (SUPPLIED)	6-32 SCREWS, STAINLESS STEEL
CONTACT CARRIERS/COLOR	NYLON OR TPU/BLACK
CONTACTS	BRASS/GOLD
OPERATING VOLTAGE	250 V
OPERATING CURRENT	4.0 A
PROTECTION CLASS to DIN 40050	IP 67 – ONLY WHEN ALL RECEPTACLES ARE COVERED WITH PLUGS OR CONNECTED
OPERATING TEMPERATURE	-40°C to +70°C (-40°F to +158°F)



SOURCE DRAWING - FOR REFERENCE ONLY

RELATED DOCUMENTS 1. 2. 3. 4.	3RD ANGLE PROJECTION 	THIS DRAWING IS PROPERTY OF TURCK INC. USE OF THIS DOCUMENT WITHOUT WRITTEN PERMISSION IS PROHIBITED.		<div>TURCK inc <i>High Technology Sensors and Automation Controls</i></div> <div>3000 CAMPUS DRIVE MINNEAPOLIS, MN 55441 1-800-544-7769 (763) 553-7300 (763) 553-0708 fax turck.com</div>			
	MATERIAL	ALL DIMENSIONS DISPLAYED ON THIS DRAWING ARE FOR REFERENCE ONLY	DRFT	DF	DATE	08/24/05	DESCRIPTION BPA-45-E113
			DSGN	DF	SCALE	1=1.5	
			FINISH	CONTACT TURCK FOR MORE INFORMATION	UNIT OF MEASUREMENT MILLIMETER [INCH]		
DO NOT SCALE THIS DRAWING					FILE: U3-00627	SHEET 1 OF 1	

C	DRAWING PROCESSED AS PART OF ECO 33971	CBM	04/07/11	33971
REV	DESCRIPTION	BY	DATE	ECO NO.